

Lung Segmental Anatomy

Simple Guide

By

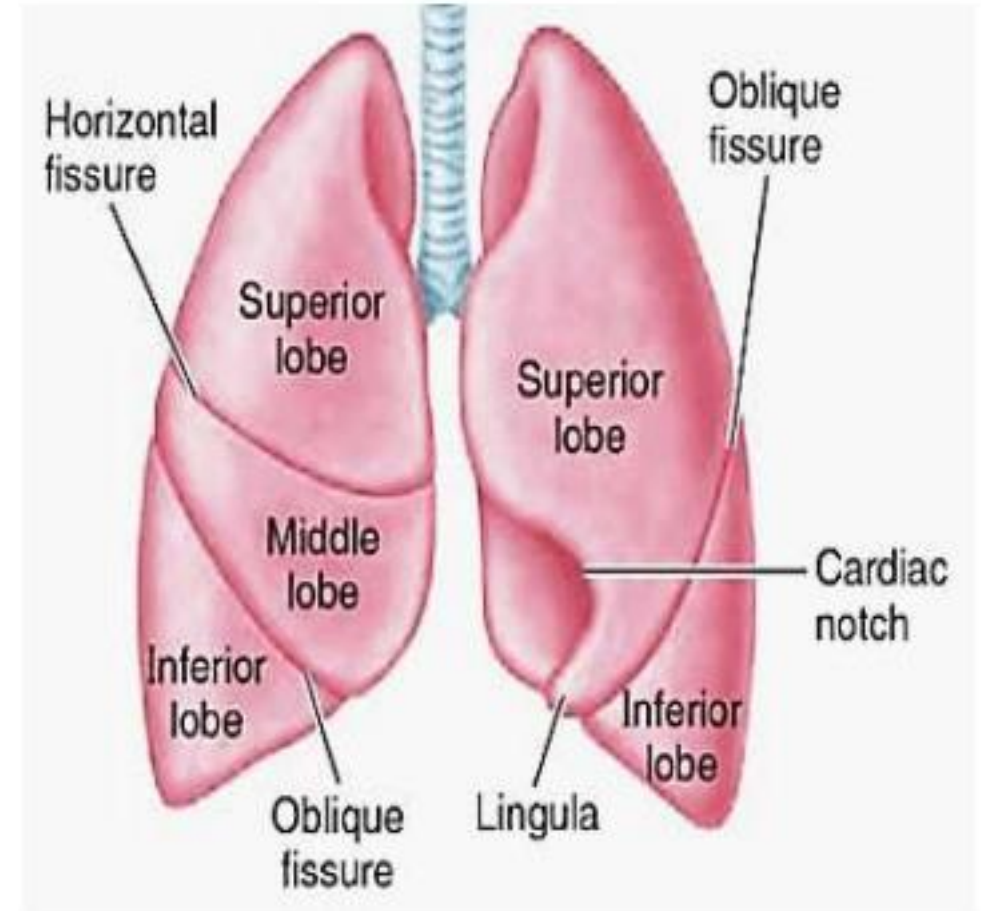
Dr. Ahmad Mokhtar Abodahab, MD

Radiology Department , Faculty of Medicine,
Sohag University

✓ Lobe

- (normally, three lobes /right & two / left);
- Each lobe is enveloped by : visceral pleura,
- Except at :
 - lung root (hilum)
 - & when an interlobar fissure is incomplete

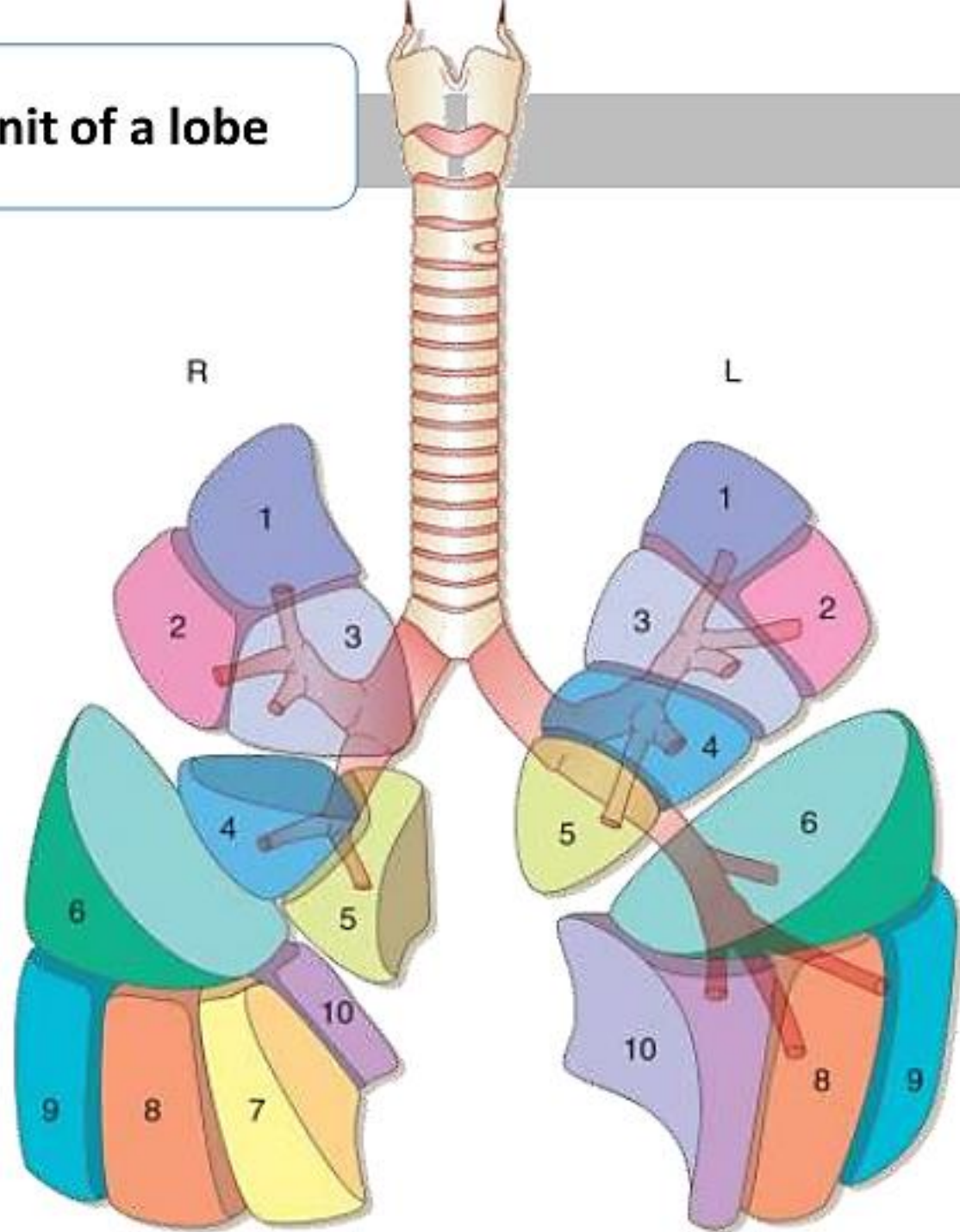
The principal division of the lungs

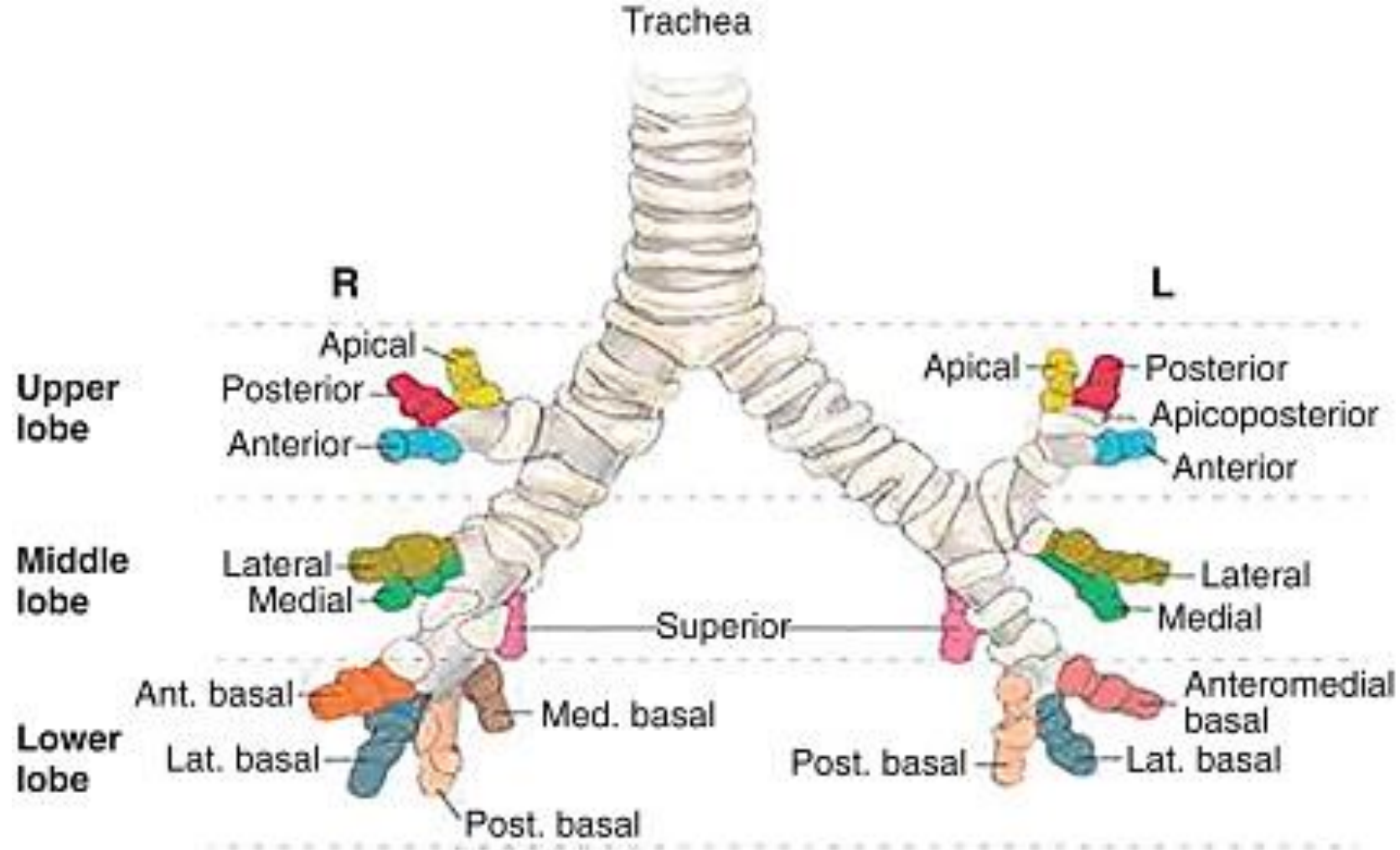


✓ Segment

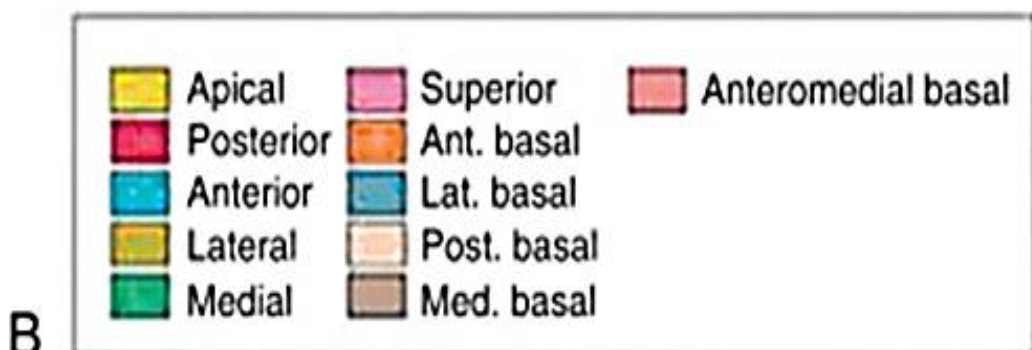
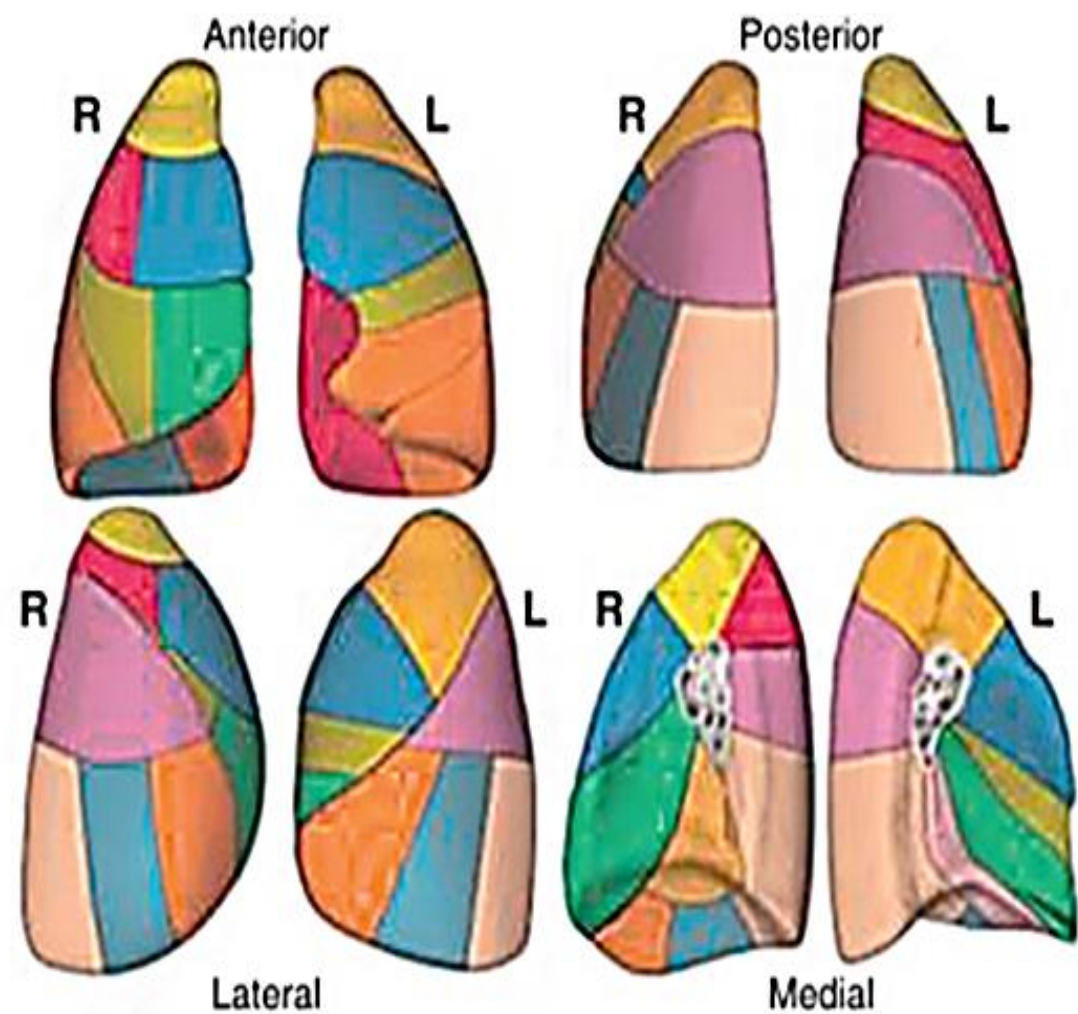
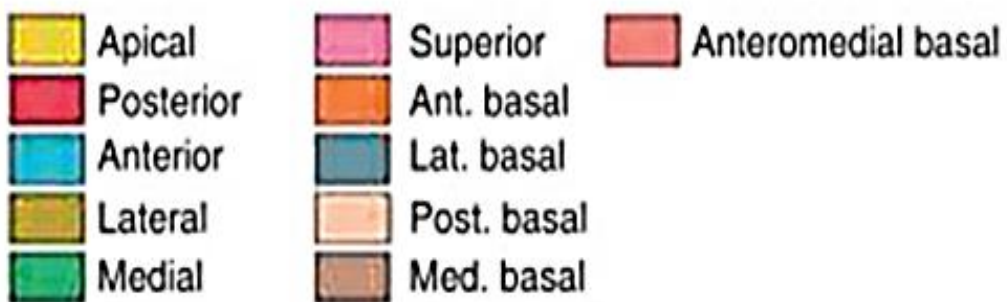
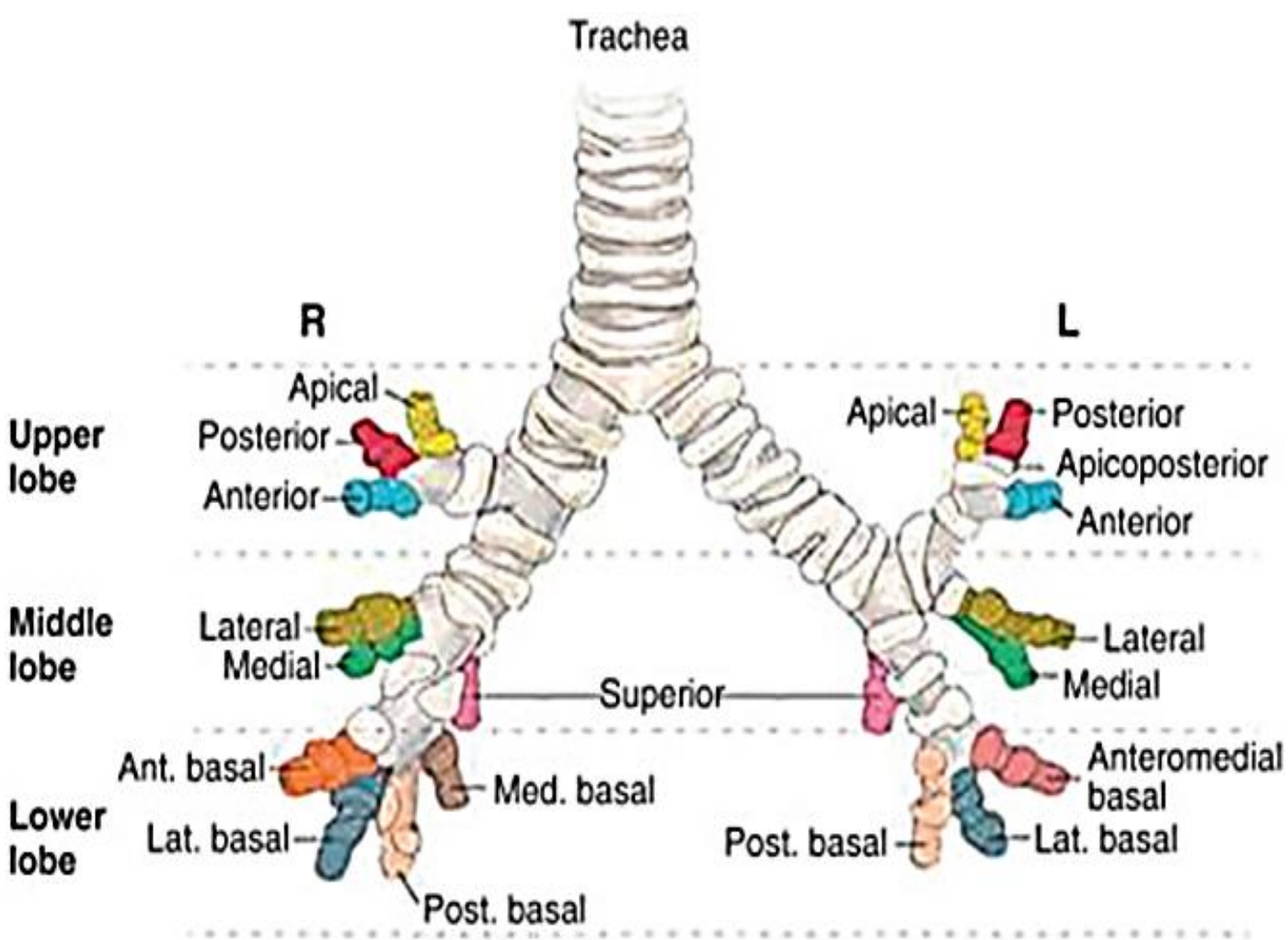
- **Ventilated** by a segmental bronchus,
- **Perfused by** a segmental pulmonary artery,
- **Drained by** an intersegmental pulmonary vein.
- There are two to five segments per lobe.

Unit of a lobe





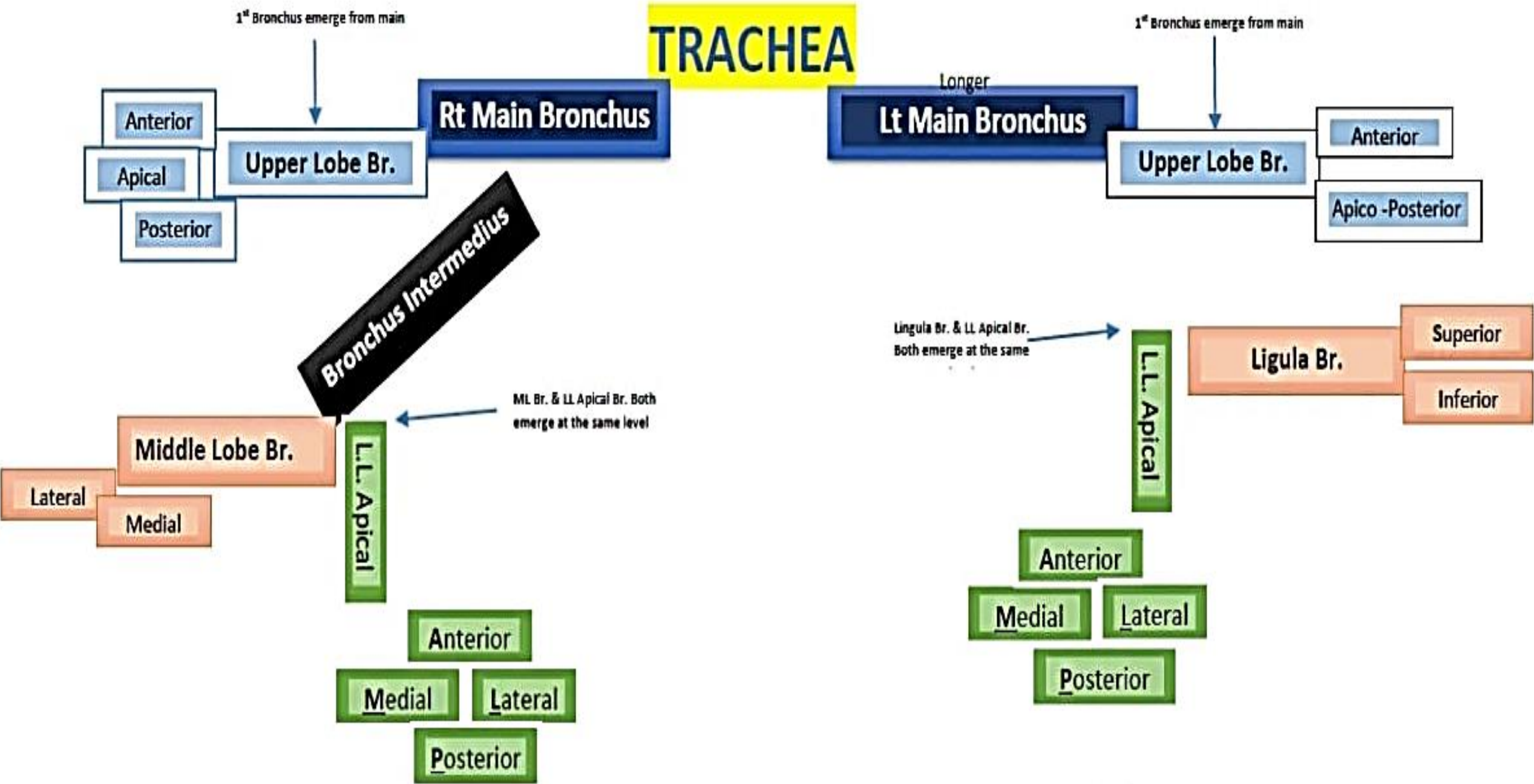
A



A

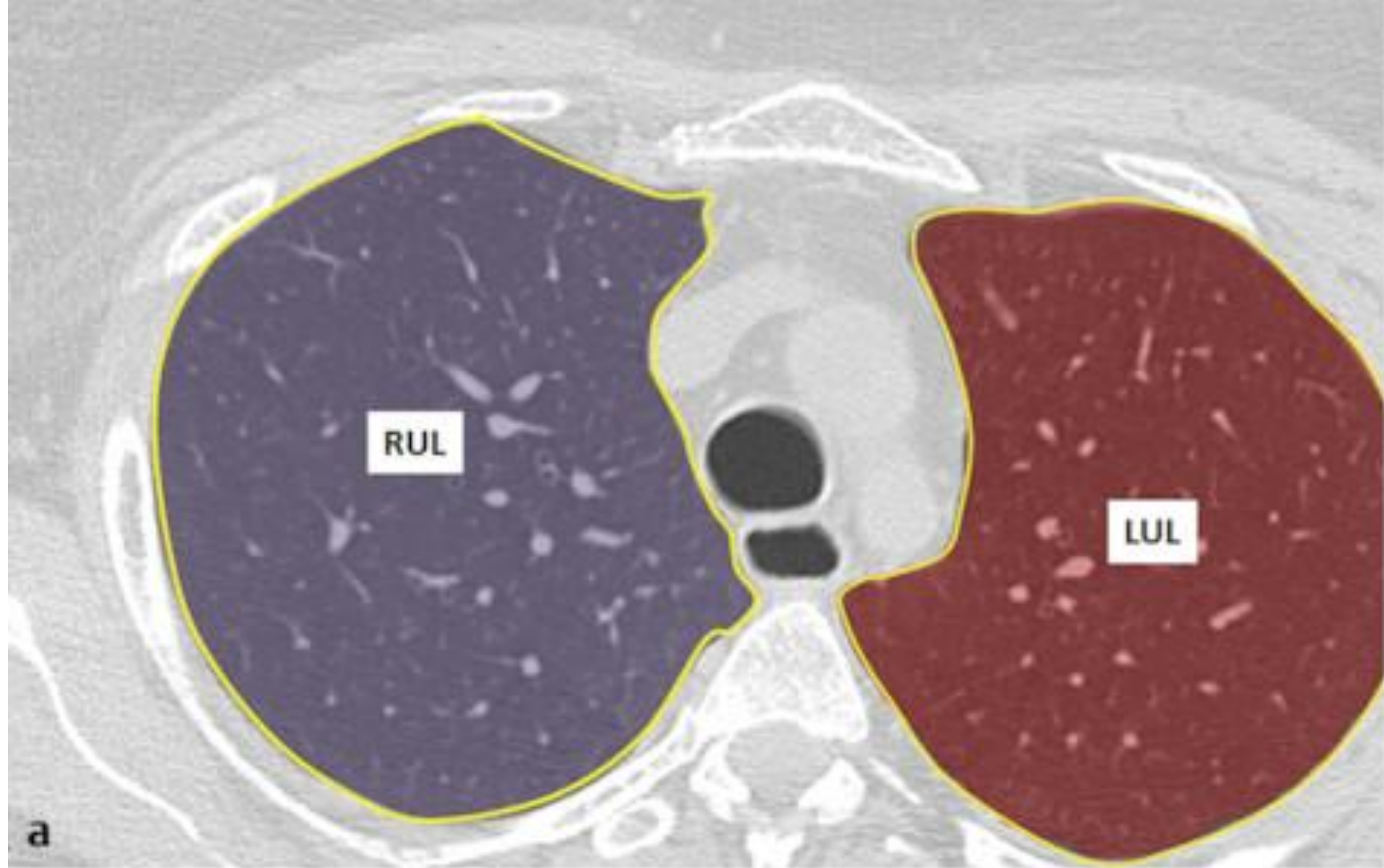
B

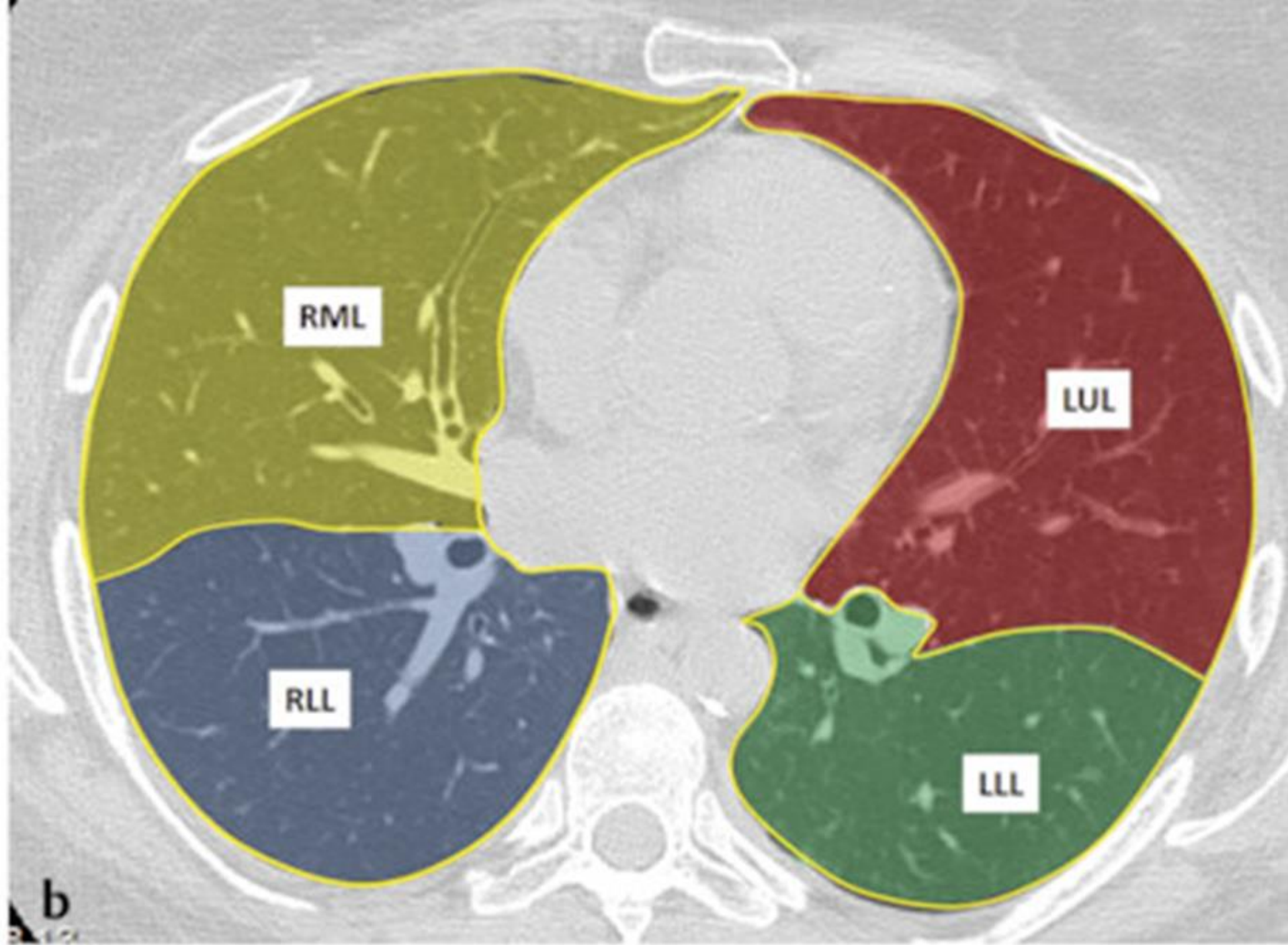
TRACHEA

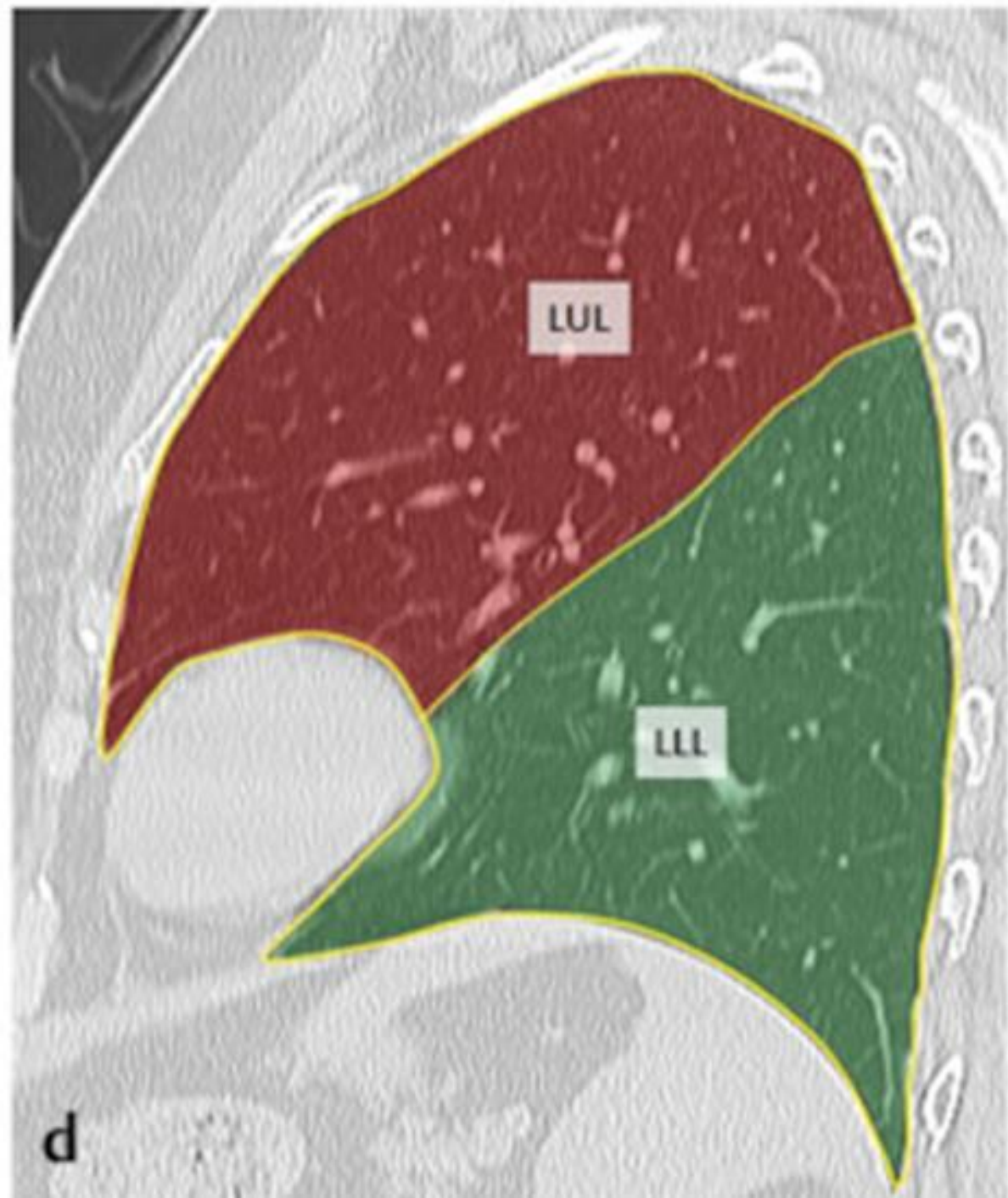
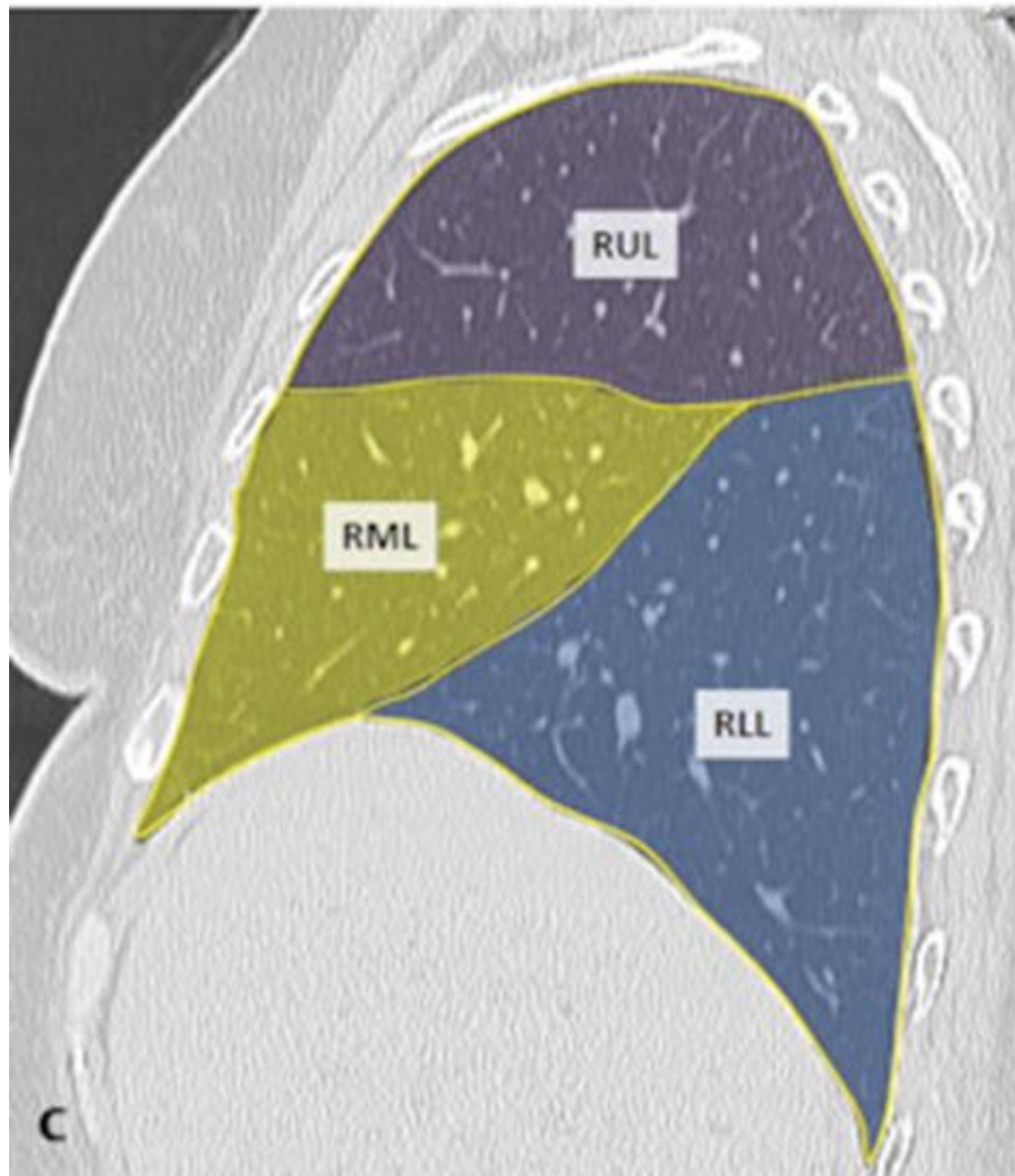


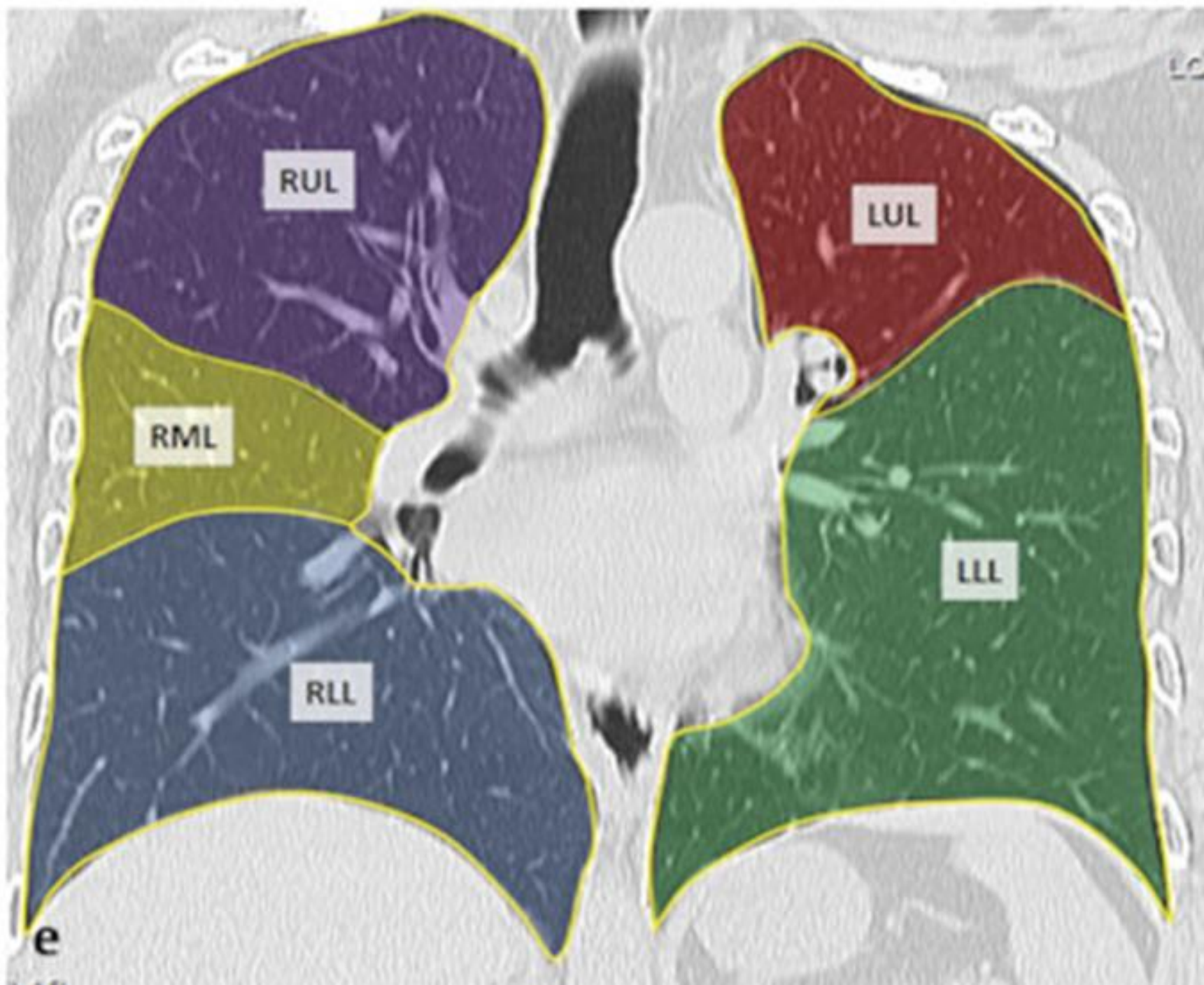
AML P

AML P

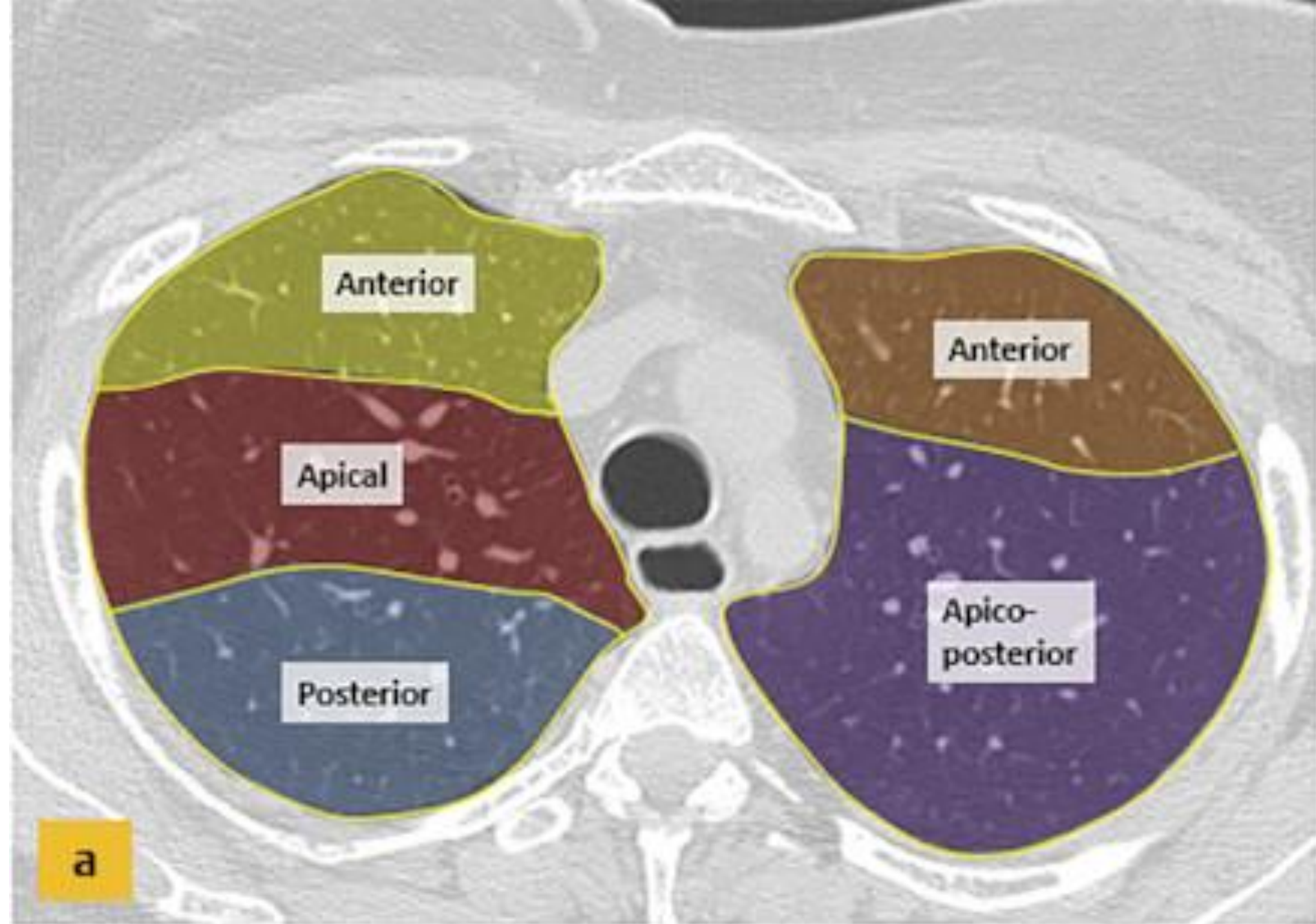


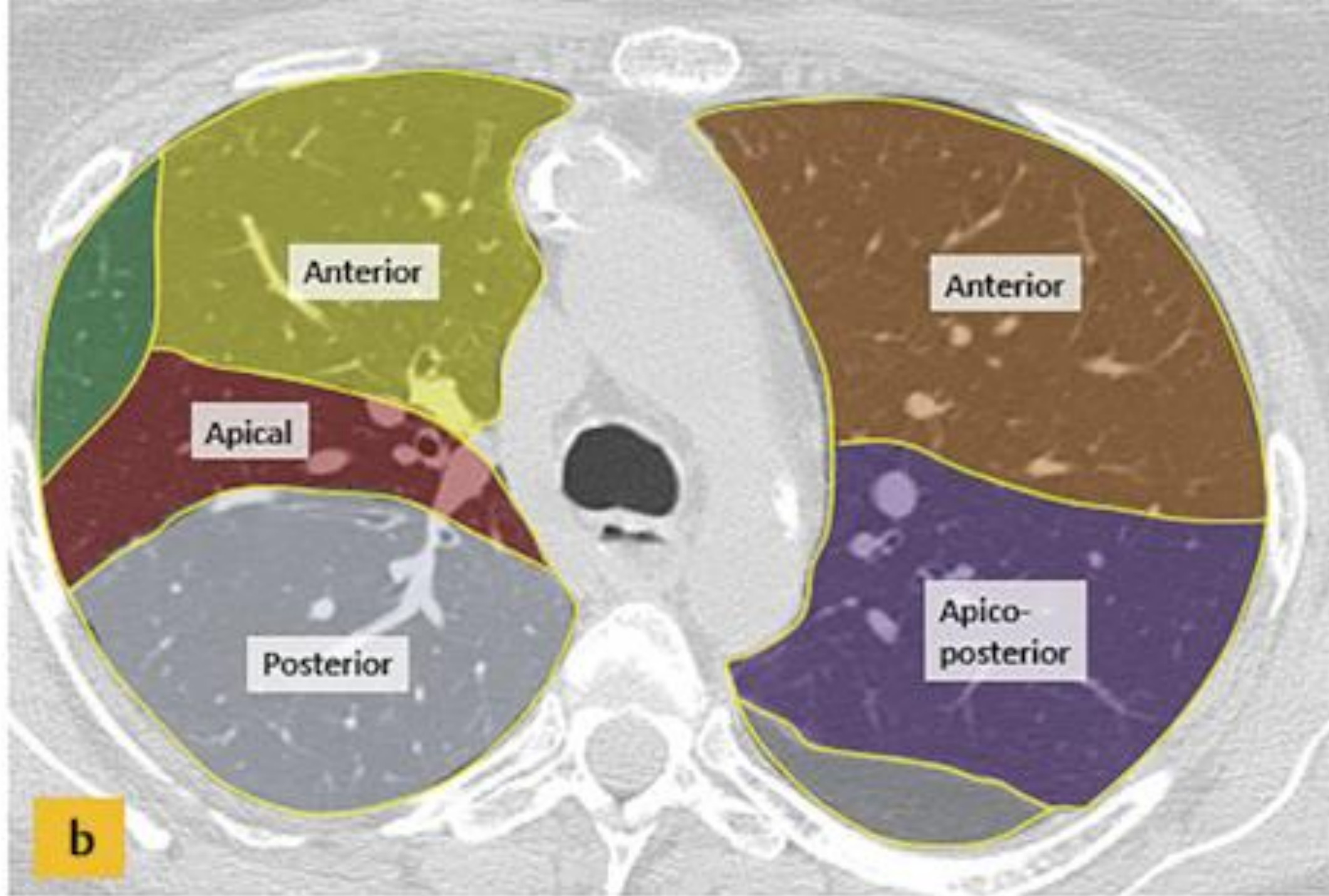


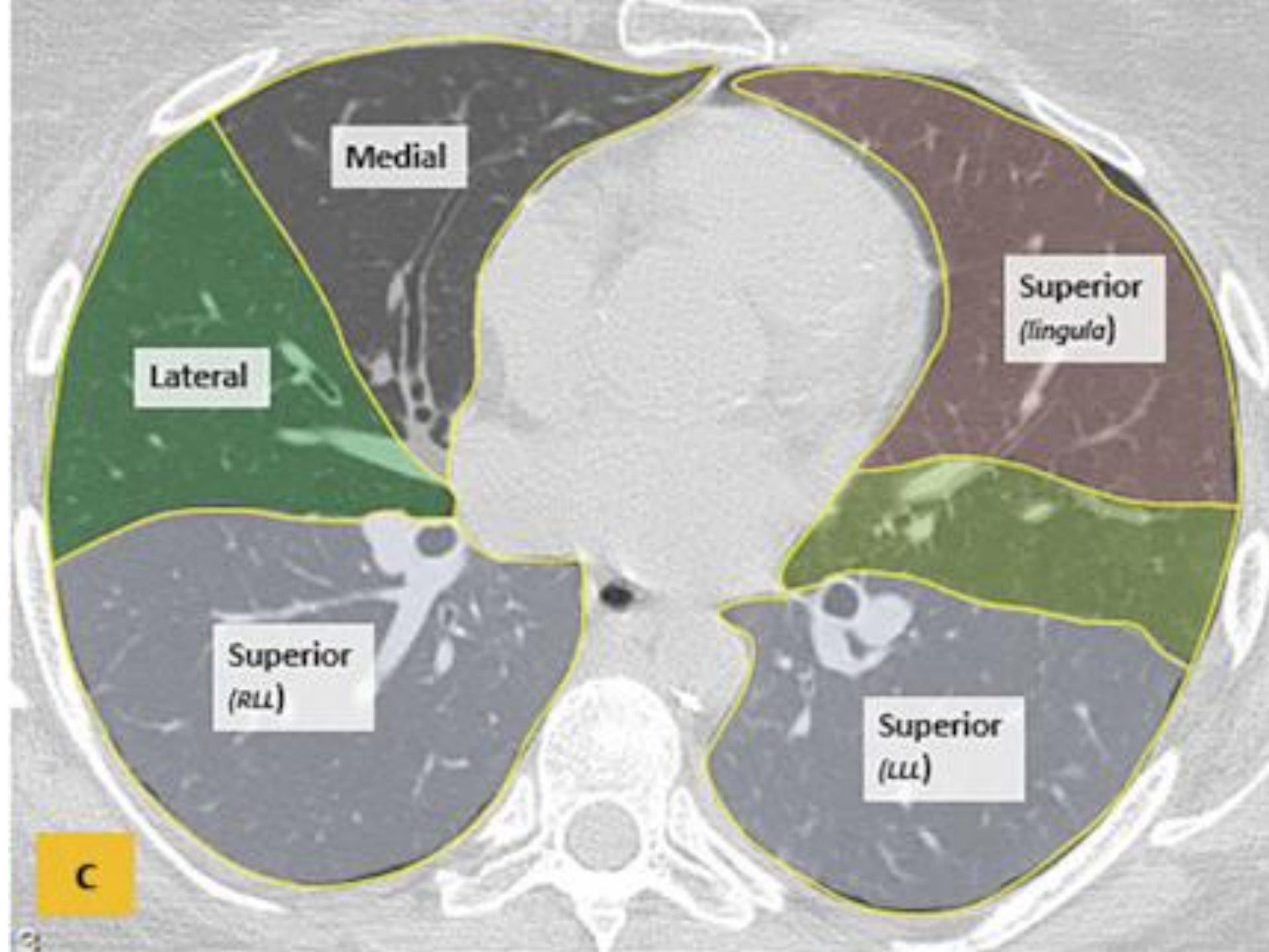




Axial Segmental Anatomy







Medial

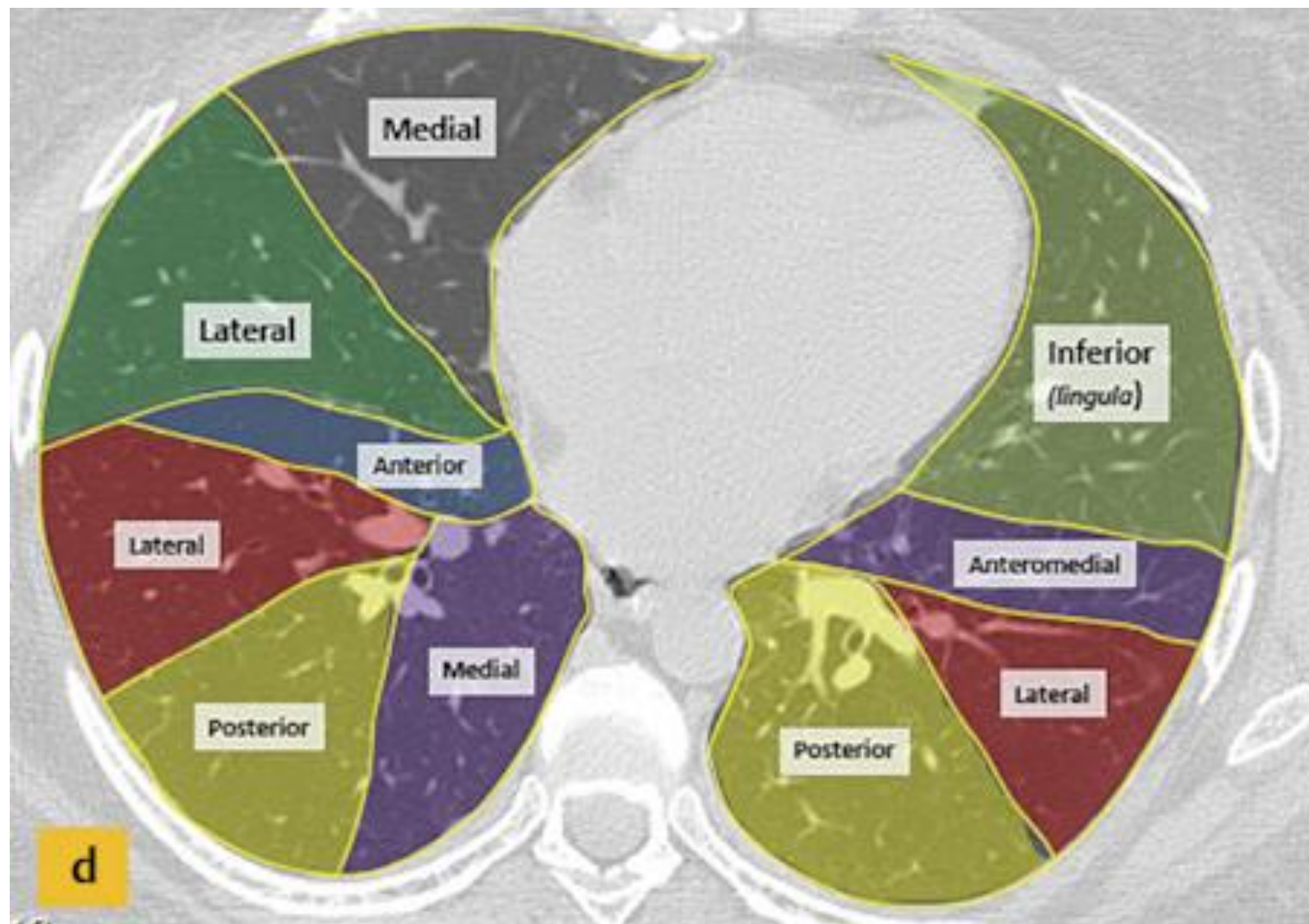
Lateral

Superior
(lingula)

Superior
(RLL)

Superior
(LLL)

C



References

- <https://radiologykey.com/4-lungs/>
- <https://radiopaedia.org>
- <http://www.radiologyassistant.nl>
- <http://www.chestmedicine.org>

Good Luck

A. M. Abodahab, MD
Nov 2023